

Franklyn James



2A Broomfield Street,

, London, E14 6GL

Asking Price £275,000

Offered to the market is this modern one bedroom, ground floor apartment that has been maintained to a high standard. The property comprises approximately 567 sq ft of internal living space and accommodation consists of main entrance with entry phone system, entrance hall with boiler cupboard, open-plan reception room with access onto large private patio area, modern kitchen with built-in appliances and base and wall units, master bedroom with built-in wardrobes and main family bathroom.

The apartment block was built in 2013 and offers a communal roof terrace and is a very short walk away from Langdon Park DLR station which provides links to Canary Wharf, Stratford and into the City via Poplar.

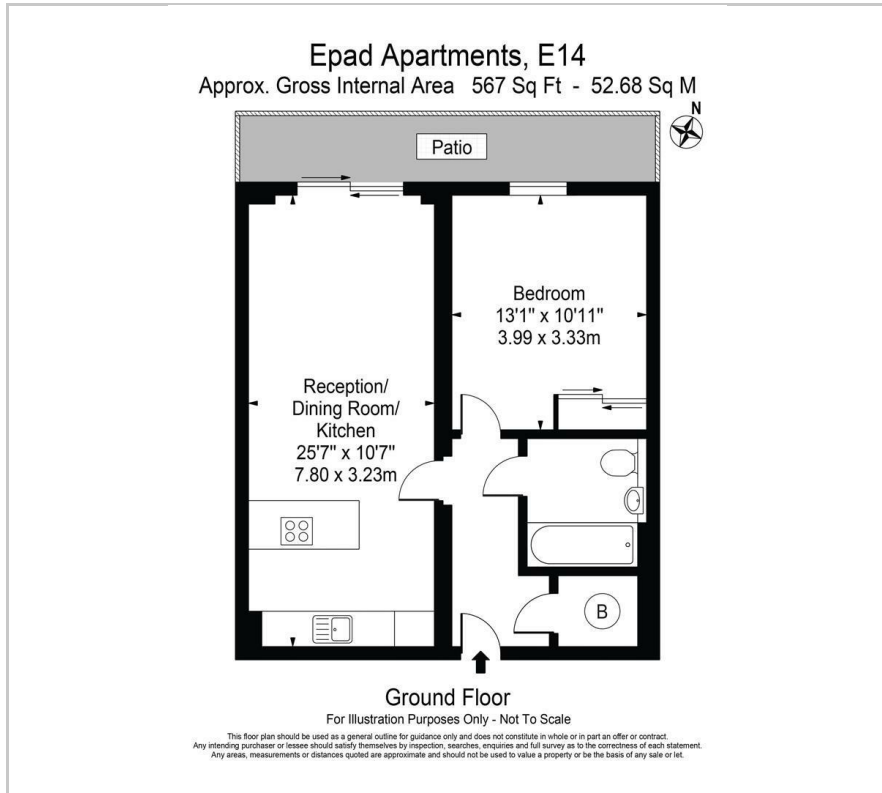
- Ground floor
- Private patio
- One bedroom
- Very well maintained
- Open plan reception room
- Close to transport links

Viewing

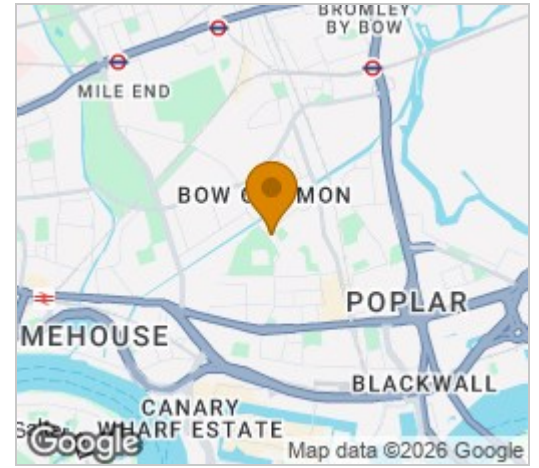
Please contact our Limehouse Sales Office on 02077911777 if you wish to arrange a viewing appointment for this property or require further information.



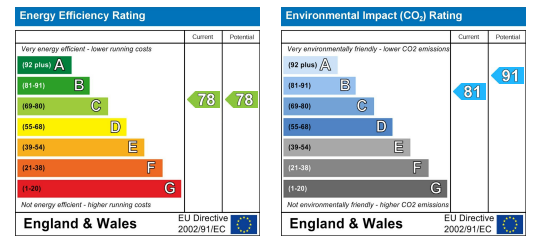
Floor Plan



Area Map



Energy Efficiency Graph



These particulars, whilst believed to be accurate are set out as a general outline only for guidance and do not constitute any part of an offer or contract. Intending purchasers should not rely on them as statements of representation of fact, but must satisfy themselves by inspection or otherwise as to their accuracy. No person in this firm's employment has the authority to make or give any representation or warranty in respect of the property.